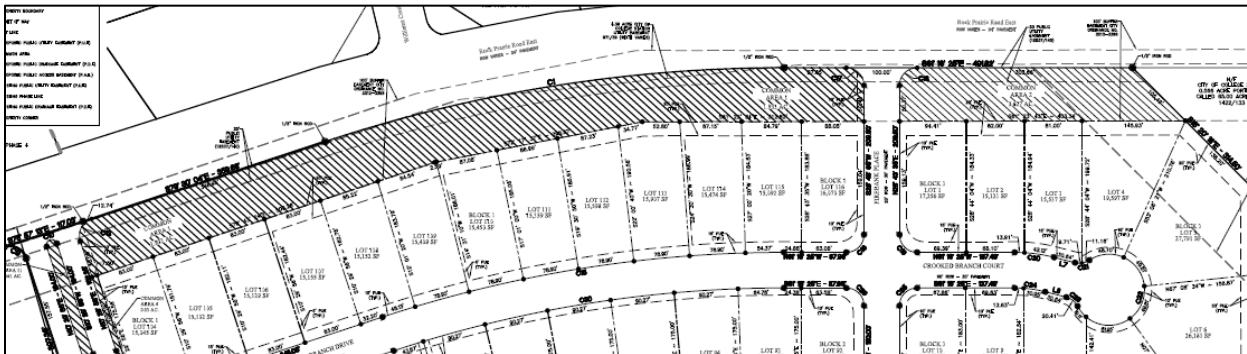


# The Crossing at Lick Creek Policy on Buffer Zones

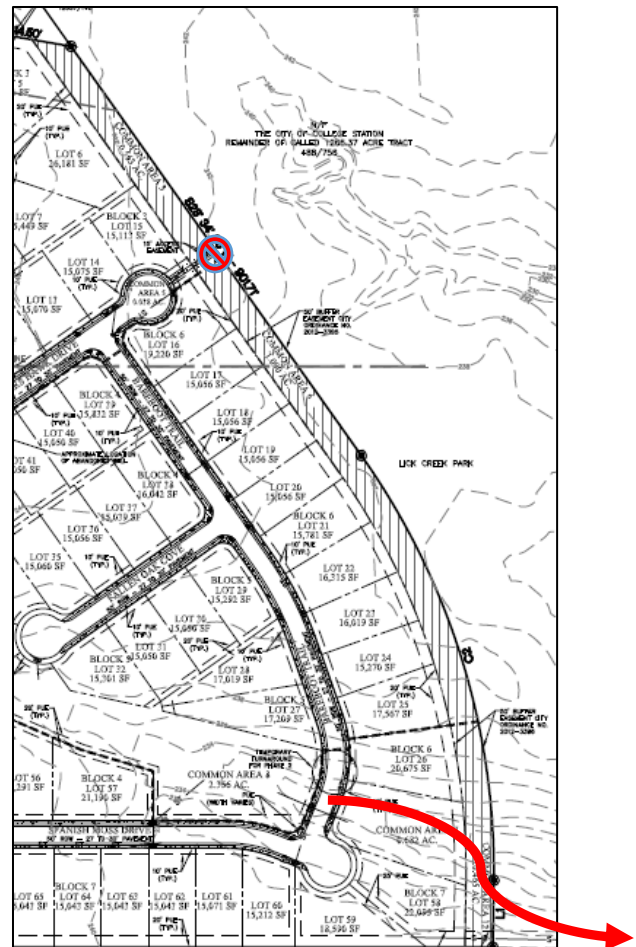
## Buffer Zone along Rock Prairie Road

There exists a 100-ft wide thinly forested buffer zone between the nearest lots to Rock Prairie Road and that street, as shown in the cross-hatched area below. We put a sidewalk in the buffer along Rock Prairie Road for residents to be able to walk a loop that includes this stretch. We do not intend to put any other pathway in this buffer, but we do intend to continue to enhance and maintain the aesthetics and orderliness of its vegetation.



## Buffer Zone adjacent to Lick Creek Park

There exists a 50-ft wide buffer zone between the lots adjacent to Lick Creek Park and the wooded park property, as shown in the cross-hatched area at-right. This heavily forested buffer adds a great deal of privacy to the residence of those lots. We will clear a narrow swath through the buffer in order to bury our fiber optic conduit for each home, but we intend that swath fill back in with vegetation. We will not cut any other pathway along this buffer stretch, and we do not intend to further change its vegetation. However, see below.



## Access to Lick Creek Park

There will be one primary path of access from within our neighborhood to Lick Creek Park, and that is shown by the **red arrow** on the figure. Unlikely but possible is a future access trail from the cul-de-sac of Coopers Hawk Dr. (⊘) as this passage would only come about by approval of the HOA membership along with an initiative by the City of College Station to bring a park trail to that access point. In this unlikely event, we would restrict passage to only our residents by installing a locked-and-keyed gate.